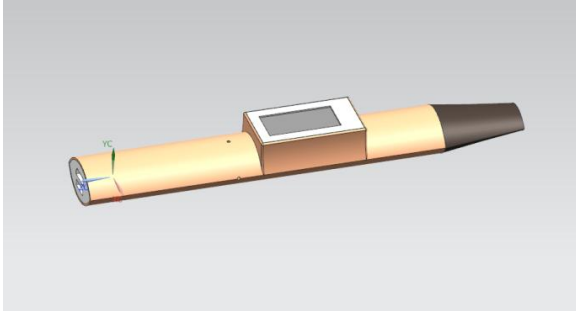


Electronic Cigarette Meter



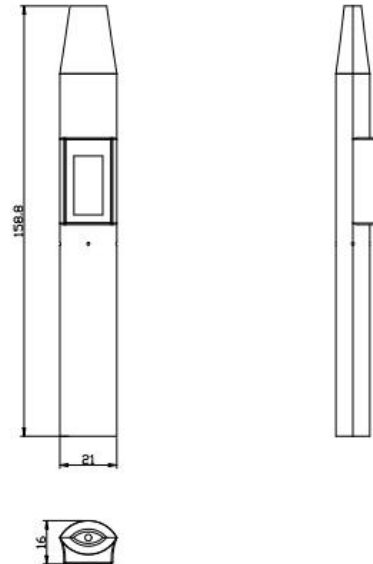
1. Product Summary

When the electronic cigarette is inhaled by the user, the Electronic Cigarette Meter monitors the flow rate of the air duct, and then converts it into an instantaneous flow value and displays it on LCD. Besides, there is a Bluetooth module inside it, which can connect the electronic cigarette device through the TUYA smart APP on the mobile phone, and display the instantaneous flow and cumulative flow in the APP simultaneously.

2. Key Features

- ◆ Small and easy to use
- ◆ LCD display
- ◆ Support Bluetooth connection
- ◆ Full calibrated
- ◆ Excellent long-term stability
- ◆ Fast response time and quick recovery
- ◆ Strong anti-interference ability

3. Dimension



Unit:mm

4. Technical Parameters

Working voltage	3.75~5.25V
Working current	<45mA
Measurement range	0~19slm
Accuracy	±1slm
Typical power supply	225mW@5V

5. Applications

This product is attached to the electronic cigarette. Together with the cigarette, it can detect the inhaled air flow in real time, control the power of electronic cigarettes according to the air flow, and accurately control the atomization, so as to prevent the amount of atomization from affecting the inhalation feeling and physical health.



Guangzhou Aosong Electronic Co., Ltd.

Add: No.17, Yunjun Road, Huangpu District, Guangzhou, China
 Tel: +86 18122702030 Fax: +86 20-89852796
 Email: inquiry@aosong.com
 Web: www.aosong.com/en, www.asairsensors.com